

Stadium Lighting



Product Overview



Patent Numbers: Canadian 2,851,391, US and Foreign Patents Pending

phone 403.567.8700 | address Suite 3200, 500 4th Avenue SW Calgary, Alberta T2P 2V6

cleantekinc.com

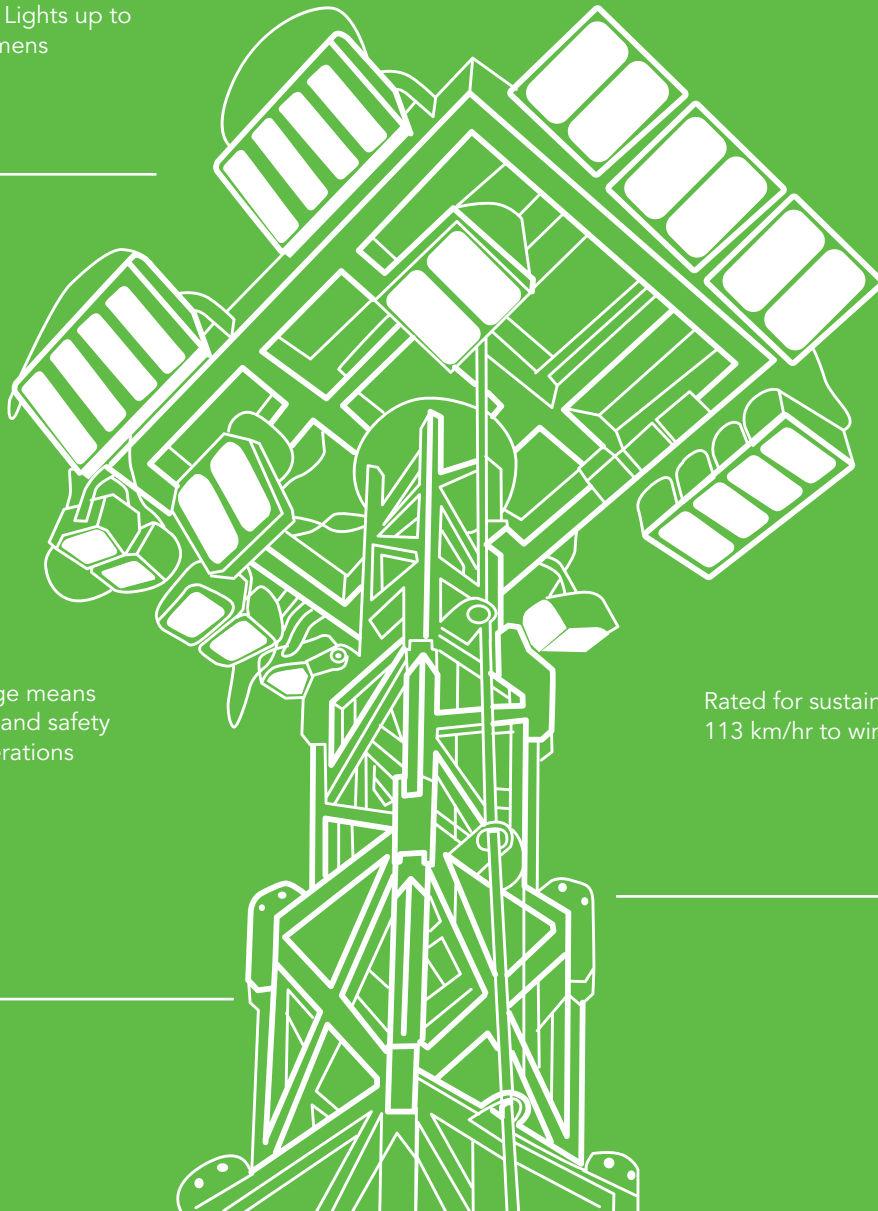
Stadium Lighting



Our Stadium Lighting products offer significant light output to accommodate a wide variety of industry requirements. With options to avoid using the on-board generator by using external power sources, fuel costs and operational management efforts are decreased to leave you a headache free system.

Stadium Lighting Overview

Powerful LED Lights up to 1.5 million lumens



100% light coverage means increased efficiency and safety during night operations

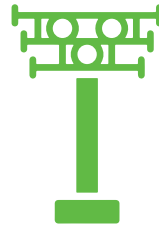
Rated for sustained wind speed or 113 km/hr to wind gusts of 225 km/hr

Features



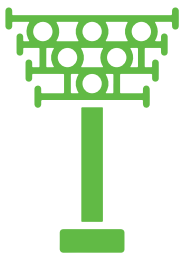
Stadium 20' (SA20)

- ✓ Extended Height: 21 ft
- ✓ 6'x 6' deployed footprint
- ✓ Portable skid mounted
- ✓ 120,000 lumens
- ✓ External power required



Stadium 45' (SA45)

- ✓ Extended Height: 45 ft
- ✓ 15'x 15' deployed footprint
- ✓ Portable skid mounted
- ✓ 500,000 lumens
- ✓ 310 litre fuel capacity

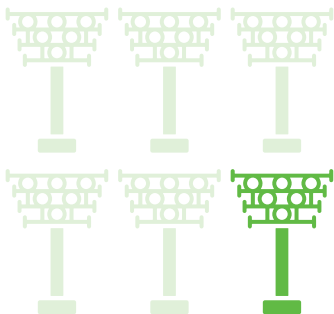


Stadium 75' (SA75)

- ✓ Extended Height: 75 ft
- ✓ 28'x 28' deployed footprint
- ✓ Portable skid mounted
- ✓ 1.5 million lumens
- ✓ 1000 litre fuel capacity



Financial Benefits



Less Towers

Eliminates the need for multiple light towers



Reduced Fuel Consumption

Reduced fuel consumption from use of an external power source

Stadium Lighting

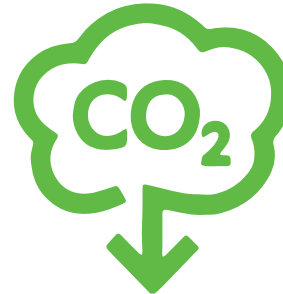
Environmental Benefits

Dark Sky Friendly
No light pollution



Less Spill Risk

Less risk of spills due to zero working fluids (oil, diesel and coolant) used by light towers



Less Diesel Towers

Less diesel towers on site creating emissions (NOx, SOx, CO2, carbon soot and particulate matter)

Operational Benefits:

- ✓ Minimal to no oil change required
- ✓ 100% light coverage means increased efficiency and safety during night operations

Safety by Design:

- ✓ Drops Compliant
- ✓ Rated sustained wind speed of 113 km/hr
- ✓ Rated gusting wind speed of 225 km/hr
- ✓ Double walled fuel take certified for transport

