

# Stadium Lighting

---



## Product Overview



Patent Numbers: Canadian 2,851,391, US and Foreign Patents Pending

phone 403.567.8700 | address Suite 3200, 500 4th Avenue SW Calgary, Alberta T2P 2V6

[cleantekinc.com](http://cleantekinc.com)

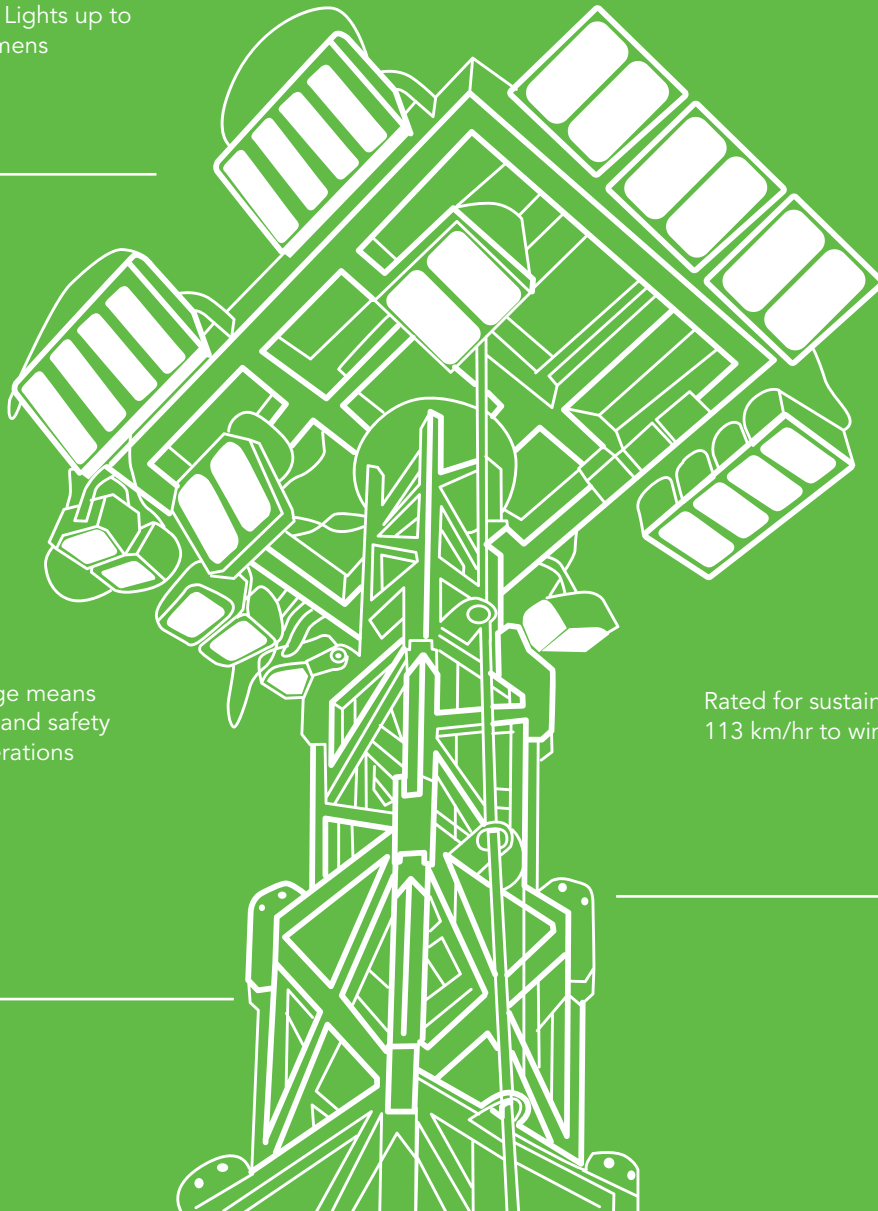
# Stadium Lighting



Our Stadium Lighting products offer significant light output to accommodate a wide variety of industry requirements. With options to avoid using the on-board generator by using external power sources, fuel costs and operational management efforts are decreased to leave you a headache free system.

## Stadium Lighting Overview

Powerful LED Lights up to 1.5 million lumens



100% light coverage means increased efficiency and safety during night operations

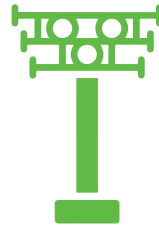
Rated for sustained wind speed or 113 km/hr to wind gusts of 225 km/hr

## Features



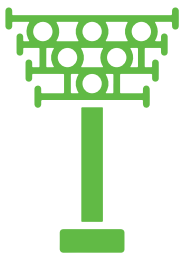
### Stadium 20' (SA20)

- ✓ Extended Height: 21 ft
- ✓ 6'x 6' deployed footprint
- ✓ Portable skid mounted
- ✓ 120,000 lumens
- ✓ External power required



### Stadium 45' (SA45)

- ✓ Extended Height: 45 ft
- ✓ 15'x 15' deployed footprint
- ✓ Portable skid mounted
- ✓ 500,000 lumens
- ✓ 310 litre fuel capacity

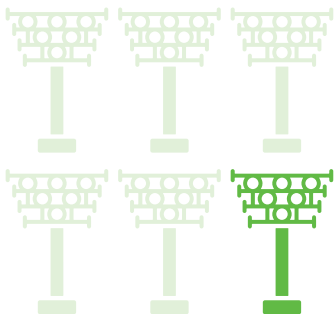


### Stadium 75' (SA75)

- ✓ Extended Height: 75 ft
- ✓ 28'x 28' deployed footprint
- ✓ Portable skid mounted
- ✓ 1.5 million lumens
- ✓ 1000 litre fuel capacity



## Financial Benefits



### Less Towers

Eliminates the need for multiple light towers



### Reduced Fuel Consumption

Reduced fuel consumption from use of an external power source

# Stadium Lighting

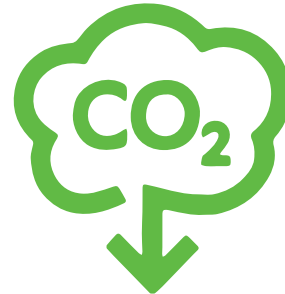
## Environmental Benefits

Dark Sky Friendly  
No light pollution



### Less Spill Risk

Less risk of spills due to zero working fluids (oil, diesel and coolant) used by light towers



### Less Diesel Towers

Less diesel towers on site creating emissions (NOx, SOx, CO2, carbon soot and particulate matter)

### Operational Benefits:

- ✓ Minimal to no oil change required
- ✓ 100% light coverage means increased efficiency and safety during night operations

### Safety by Design:

- ✓ Drops Compliant
- ✓ Rated sustained wind speed of 113 km/hr
- ✓ Rated gusting wind speed of 225 km/hr
- ✓ Double walled fuel take certified for transport

